

## DriscoPlex® HDPE Molded Fitting

### Standard Water Tapping Tee



DriscoPlex® HDPE Molded Fittings are available to meet your needs in compliance with ASTM D2513, D3261, F2897 and AWWA C906 product standards.

Produced from only the highest rated HDPE material, DriscoPlex® Fittings are manufactured from NSF-61 approved PE 4710 resin as listed in PPI-TR4.

#### DriscoPlex® PE Fitting Advantages:

- ✓ Durable
- ✓ Leak Tight
- ✓ Excellent Flow
- ✓ Easy Install
- ✓ Light Weight
- ✓ Impact Resistant
- ✓ Fusibility
- ✓ Corrosion Resistant
- ✓ Chemical Resistant
- ✓ Life Cycle Cost
- ✓ Toughness
- ✓ Environmental

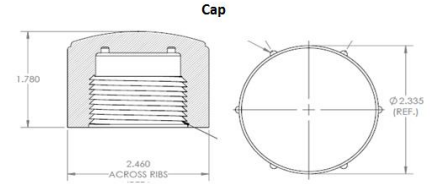
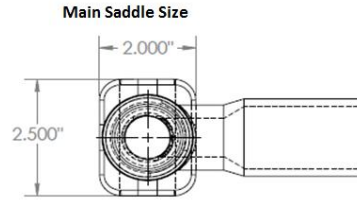
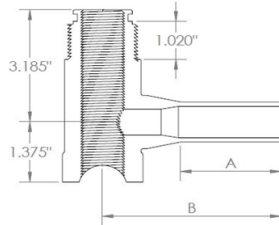
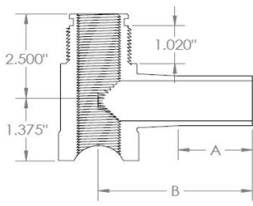
DriscoPlex® PE Fittings Material Physical Properties		
Property	Standard	HDPE Typical Values
Material Designation	ASTM F412	PE4710
Cell Classification	ASTM D3350	445574C (Black)
Density [4]	ASTM D1505	0.960 g/cc (Black)
Melt Index [4]	ASTM D1238	0.08 g/10 min
Flexural Modulus [5]	ASTM D790	>120,000 psi
Tensile Strength [5]	ASTM D638 Type IV	>3500 psi
SCG (PENT) [7]	ASTM F1473	10,000 hours
HDB at 73°F (23°C) [4]	ASTM D2837	1600 psi
Color; UV stabilizer [C]	ASTM D3350	Black

This is not a product specification and does not guarantee or establish specific minimum or maximum values or manufacturing tolerance for material or piping products to be supplied. Values obtained from tests of specimens taken from piping product may vary from these typical values.

# Standard Water Tap Tee Water Butt Rectangular Base HDPE - PE 4710

Standard Chimney / Style "A" Outlet

Extended Chimney / Style "A" Outlet



Outlet	Main Size (IPS)	DR/Wall	Dimension A / B (in)	Chimney & Style	IPS Base			
					Weight (lbs)	Brass Cutter	Package	Part #
3/4" CTS	2"	0.090	2.00 / 4.65	Std / "A"	0.39	0.8	10pkg/box	1118689
	3"	0.090			0.55	0.8 XL	10pkg/box	1118690
	4"	0.090			0.55	0.8 XL	10pkg/box	1118691
	Ext / "A"	6"		0.090	0.75	0.8 XXL	5pkg/box	1118692
		8"		0.090	0.75	0.8 XXL	5pkg/box	1122158
		10"		0.090	0.75	0.8 XXL	5pkg/box	1122159
		12"		0.090	0.75	0.8 XXL	5pkg/box	1122160
1" CTS	2"	0.102	2.48 / 4.34	Std / "A"	0.55	0.8	10pkg/box	1118693 <sup>C, UP</sup>
	3"	0.102			0.61	0.8 XL	10pkg/box	1118694 <sup>C, UP</sup>
	4"	0.102			0.61	0.8 XL	10pkg/box	1118695 <sup>C, UP</sup>
	Ext / "A"	6"		0.102	0.71	0.8 XXL	5pkg/box	1118696 <sup>C, UP</sup>
		8"		0.102	0.71	0.8 XXL	5pkg/box	1122161 <sup>C, UP</sup>
		10"		0.102	0.71	0.8 XXL	5pkg/box	1122172 <sup>C, UP</sup>
		12"		0.102	0.71	0.8 XXL	5pkg/box	1122173 <sup>C, UP</sup>
1" IPS	2"	DR 11	2.70 / 3.78	Std / "A"	0.61	0.8	10pkg/box	1118710 <sup>C, UP</sup>
	3"	DR 11			0.61	0.8 XL	10pkg/box	1118711 <sup>C, UP</sup>
	4"	DR 11			0.61	0.8 XL	10pkg/box	1118712 <sup>C, UP</sup>
	Ext / "A"	6"		DR 11	0.76	0.8 XXL	5pkg/box	1118713 <sup>C, UP</sup>
		8"		DR 11	0.76	0.8 XXL	5pkg/box	1118714 <sup>C, UP</sup>
		10"		DR 11	0.76	0.8 XXL	5pkg/box	1118715 <sup>C, UP</sup>
		12"		DR 11	0.76	0.8 XXL	5pkg/box	1118716 <sup>C, UP</sup>
Outlet	Main Size (DIPS)	DR/Wall	Dimension A / B (in)	Chimney & Style	DIPS Base			
					Weight (lbs)	Brass Cutter	Package	Part #
3/4" CTS	4"	0.090	2.00 / 4.65	Ext / "A"	0.71	0.8 XXL	5pkg/box	1118676
	6"	0.090			0.71	0.8 XXL	5pkg/box	1118544
	8"	0.090			0.71	0.8 XXL	5pkg/box	1118545
	10"	0.090			0.71	0.8 XXL	5pkg/box	1118546
	12"	0.090			0.71	0.8 XXL	5pkg/box	1118547
1" CTS	4"	0.102	2.48 / 4.34	Ext / "A"	0.71	0.8 XXL	5pkg/box	1122157 <sup>C, UP</sup>
	6"	0.102			0.71	0.8 XXL	5pkg/box	1118548 <sup>C, UP</sup>
	8"	0.102			0.71	0.8 XXL	5pkg/box	1118549 <sup>C, UP</sup>
	10"	0.102			0.71	0.8 XXL	5pkg/box	1118550 <sup>C, UP</sup>
	12"	0.102			0.71	0.8 XXL	5pkg/box	1118551 <sup>C, UP</sup>
1" IPS	4"	DR 11	2.70 / 3.78	Ext / "A"	0.72	0.8 XXL	5pkg/box	1122174 <sup>C, UP</sup>
	6"	DR 11			0.72	0.8 XXL	5pkg/box	1122175 <sup>C, UP</sup>
	8"	DR 11			0.72	0.8 XXL	5pkg/box	1122176 <sup>C, UP</sup>
	10"	DR 11			0.72	0.8 XXL	5pkg/box	1122177 <sup>C, UP</sup>
	12"	DR 11			0.72	0.8 XXL	5pkg/box	1122178 <sup>C, UP</sup>

**For High Volume Tap Tees, please refer to  
[PP9.06 Electrofusion Tap Tees](#)**

Legend	
C – CSA	UP – Uniform Plumbing Code™