

DriscoPlex[®] MDPE & HDPE Molded Fittings

Molded Butt End Cap



DriscoPlex[®] MDPE and HDPE Molded Fittings are available to meet your needs in compliance with ASTM D2513, D3261, F2897 and AWWA C906 product standards.

Made in the USA and produced from high quality MDPE and HDPE material, DriscoPlex[®] Molded PE Fittings are manufactured from both PE 2708 resin and NSF-61/Annex G approved PE 4710 resin as listed in PPI-TR4.

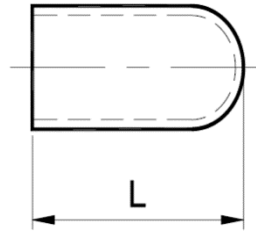
DriscoPlex[®] PE Fittings Advantages:

- ✓ Durable
- ✓ Leak Tight
- ✓ Excellent Flow
- ✓ Easy Install
- ✓ Light Weight
- ✓ Impact Resistant
- ✓ Fusibility
- ✓ Corrosion Resistant
- ✓ Chemical Resistant
- ✓ Life Cycle Cost
- ✓ Toughness
- ✓ Environmental

DriscoPlex[®] PE Fittings Material Physical Properties

Property	Standard	HDPE Typical Values	MDPE Typical Values
Material Designation	ASTM F412	PE4710	PE 2708
Cell Classification	ASTM D3350	445574C (Black)	234373E
Density [4]	ASTM D1505	0.960 g/cc (Black)	0.939 g/cc (Yellow)
Melt Index [4]	ASTM D1238	0.08 g/10 min	0.18 g/10 min
Flexural Modulus [5]	ASTM D790	>120,000 psi	> 90,000 psi
Tensile Strength [5]	ASTM D638 Type IV	>3500 psi	> 2800 psi
SCG (PENT) [7]	ASTM F1473	10,000 hours	> 2000 hours
HDB at 73°F (23°C) [4]	ASTM D2837	1600 psi	1250 psi
Color; UV stabilizer [C] [E]	ASTM D3350	Black –	– Yellow

This is not a product specification and does not guarantee or establish specific minimum or maximum values or manufacturing tolerance for material or piping products to be supplied. Values obtained from tests of specimens taken from piping product may vary from these typical values.



Molded Butt End Cap

Butt End Caps	DR/Wall	Dimensions L (in)	Package Quantity	Package Weight (lbs)	Box Quantity	Part Number	
						MDPE	HDPE
1/2" CTS	0.090 wall	2.0	10	0.01	200	1005162	1006413
3/4" CTS	0.090 wall	2.3	10	0.02	100	-	1007903
1" CTS	0.102 wall	2.3	10	0.05	100	1005203	1006416
	0.125 wall			0.05		-	1071088
1/2" IPS	DR 9.3	2.2	10	0.01	100	1049760	1010853
3/4" IPS	DR 11	2.3	10	0.05	100	1005176	1007900
1" IPS	DR 9	2.4	10	0.05	50	-	1007905
	DR 11			0.05		1005191	1007908
1 1/4" IPS	DR 9	3.9	10	0.10	50	-	1007912
	DR 10	3.9		0.10		1005214	-
	DR 11			0.10		-	1007915
1 1/2" IPS	DR 11	3.7	10	0.15	50	1005225	1007921
2" IPS	DR 7	4.2	10	0.30	40	-	1097162 ^{F3}
	DR 9			0.29		-	1007924 ^{F2}
	DR 11			0.24		1005239	1006420 ^{F1}
3" IPS	DR 7	4.8	20	0.80	20	-	1096047 ^{F3}
	DR 9	3.9		0.75		-	1010854 ^{F2}
	DR 11 / 11.5			0.50		1005254	1007930 ^{F1}
	DR 17			0.40		-	1097163
4" IPS	DR 7	4.0	10	1.20	10	-	1096046 ^{F3}
	DR 9	4.0		1.00		-	1074064 ^{F2}
	DR 11 / 11.5			0.85		1005271	1006428 ^{F1}
	DR 13.5			0.84		1005280	-
	DR 17			0.75		-	1097164
6" IPS	DR 7	9.6	6	4.45	6	-	1096045 ^{F3}
	DR 9	5.2	5	4.30	5	-	1007938 ^{F2}
	DR 11 / 11.5			2.58		1005285	1006436 ^{F1}
	DR 13.5			2.45		1005293	-
DR 17	2.35			-		1097165	
8" IPS	DR 7	5.2	1	6.00	1	-	1097166 ^{F3}
	DR 9			5.52		-	1073911 ^{F2}
	DR 11			4.40		1005306	1007942 ^{F1}
	DR 13.5			4.25		1005311	1097226
	DR 17			4.08		-	1097173

This product flyer is intended for reference purposes. It should not be used in place of the advice from a licensed Professional Engineer. Additional fitting sizes and DR available. Contact Performance Pipe. www.performancepipe.com

Legend

F1 – FM 200 F2 – FM 250 F3 – FM 335

All part numbers shown above are certified to CSA and the Uniform Plumbing Code™ per NSF
*FM Products only available in High Density Materials