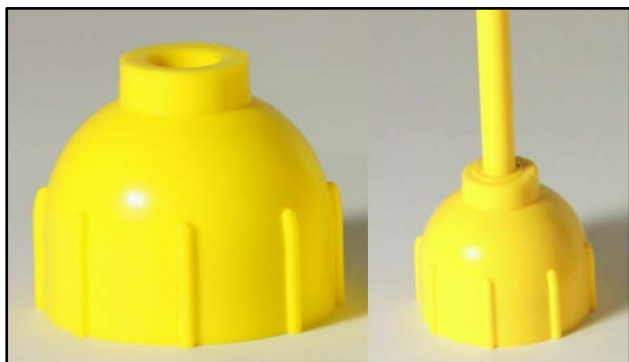


## DriscoPlex<sup>®</sup> MDPE Molded Fitting

### Molded Socket Purge Cap



DriscoPlex<sup>®</sup> MDPE Molded Fittings are available to meet your needs in compliance with ASTM D2513, D2683, and F2897 product standards.

Made in the USA and produced from only the highest rated MDPE material, DriscoPlex<sup>®</sup> Fittings are manufactured from PE 2708 resin as listed in PPI-TR4.

#### DriscoPlex<sup>®</sup> PE Fitting Advantages:

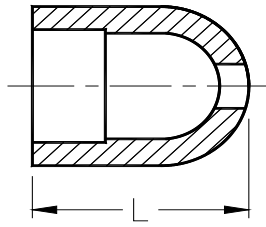
- ✓ Durable
- ✓ Leak Tight
- ✓ Excellent Flow
- ✓ Easy Install
- ✓ Light Weight
- ✓ Impact Resistant
- ✓ Fusibility
- ✓ Corrosion Resistant
- ✓ Chemical Resistant
- ✓ Life Cycle Cost
- ✓ Toughness
- ✓ Environmental

DriscoPlex <sup>®</sup> PE Fittings Material Physical Properties		
Property	Standard	MDPE Typical Values
Material Designation	ASTM F412	PE 2708
Cell Classification	ASTM D3350	234373E
Density [4]	ASTM D1505	0.939 g/cc (Yellow)
Melt Index [4]	ASTM D1238	0.18 g/10 min
Flexural Modulus [5]	ASTM D790	> 90,000 psi
Tensile Strength [5]	ASTM D638 Type IV	> 2800 psi
SCG (PENT) [7]	ASTM F1473	> 2000 hours
HDB at 73°F (23°C) [4]	ASTM D2837	1250 psi
Color; UV stabilizer [E]	ASTM D3350	– Yellow

This is not a product specification and does not guarantee or establish specific minimum or maximum values or manufacturing tolerance for material or piping products to be supplied. Values obtained from tests of specimens taken from piping product may vary from these typical values.

# Molded Socket Purge Cap

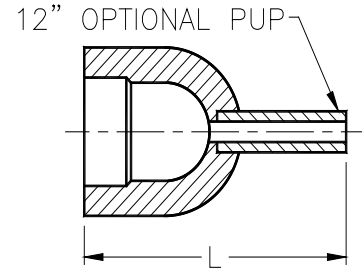
Socket



Socket

Socket

Butt



		Molded Socket Purge Cap			Molded Socket Purge Cap with Nipple		
Socket x Socket Purge Caps	Package Quantity	MDPE	Dimensions L (in)	Package Weight (lbs)	MDPE	Dimensions L (in)	Package Weight (lbs)
2" IPS x 1/2" CTS	10	1049627 <sup>C, UP</sup>	2.5	3.7	1049624	16.25"	5.65
2" IPS x 1/2" IPS	10	1049622	2.5	3.7	-	-	-
2" IPS x 1" CTS	10	1102031	2.5	3.7	1112742	16.25"	5.65
2" IPS x 3/4" IPS	10	1067137	2.5	2.64	-	-	-
3" IPS x 1/2" CTS	10	1049651 <sup>C, UP</sup>	3.5	11	-	-	-
3" IPS x 3/4" IPS	10	1075397	3.5	10	-	-	-
4" IPS x 1/2" CTS	10	1049660 <sup>C, UP</sup>	4.5	22.5	1049722	16.25"	24.15
4" IPS x 1/2" IPS	10	1049658	4.5	22.5	-	-	-
4" IPS x 3/4" IPS	10	1084182	4.5	10	-	-	-

This product flyer is intended for reference purposes. It should not be used in place of the advice from a licensed Professional Engineer. Additional fitting sizes and DR available. Contact Performance Pipe. [www.performancepipe.com](http://www.performancepipe.com)

Legend	
C – CSA	UP – Uniform Plumbing Code™